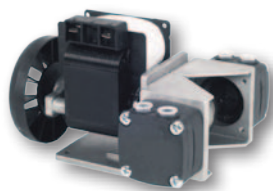
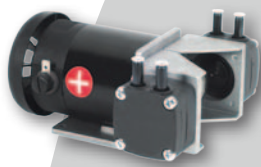


serie M

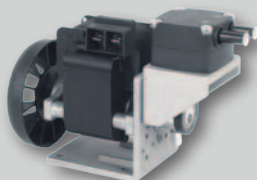
Pompe per vuoto e compressori a membrana Diaphragm vacuum pumps and compressors



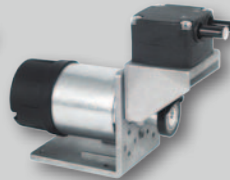
M41 BX AC 04



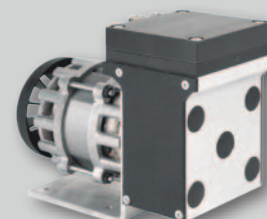
M41 BX DC 53



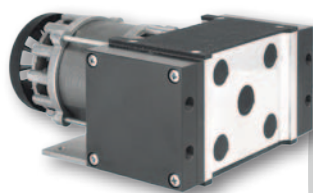
M41 S AC 03



M41 S DC 52



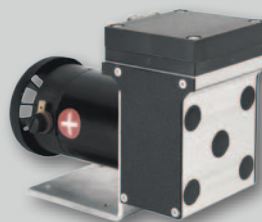
M71 S AC 05



M71 BX AC 08



M71 BX DC 55



M71 S DC 54



EMMEBOX

Le pompe a membrana "Serie M41 e M71" sono completamente prive di olio e vengono utilizzate per generare vuoto o pressione.

Le pompe della "Serie M41" hanno il corpo pompa realizzato in Ryton®, membrana e guarnizione in VITON oppure in EPDM.

Le pompe "Serie M71" hanno il corpo pompa in alluminio anticorrosione galvanicamente trattato, mentre le membrane e le guarnizioni possono essere fornite in NBR, EPDM o VITON.

Tutte le pompe sono disponibili in versione con singola o doppia testa per l'utilizzo in parallelo o in serie, con motori in corrente continua oppure corrente alternata monofase.

Le pompe "Serie M41" possono essere fornite anche provviste di tre o quattro teste aumentando così la portata.

Diaphragm pumps of "M41 and M71 Series" are completely oil free and don't need any maintenance.

They can be used either to make vacuum or pressure.

The "M41 Series" has a Ryton®-made pump body, the diaphragm and the gasket Viton or EPDM-made. The "M71 Series" has the pump body made of galvanized anticorrosion aluminium, the diaphragms and the gaskets can be made of NBR, EPDM or VITON. All the pumps are available either with single or double head to be used either in parallel or in series. The motors can be either DC or AC single-phase type.

The M41 pumps can also be supplied with three or four heads to increase the capacity.

		M41 S AC 03	M41 S DC 52	M41 BX AC 04	M41 BX DC 53	M71 S AC 05	M71 S DC 54	M71 BX AC 08	M71 BX DC 55
Portata nominale Nominal capacity	50 Hz	8	8,5	Parallel 16 Series 8	Parallel 17	30	33	Parallel 56 Series 30	Parallel 62
	60 Hz	9,5		Parallel 19 Series 9,5	Series 8,5	36		Parallel 68 Series 36	Series 33
Pressione (Relativa) Pressure (Rel)	bar	2	2,5	2	3	0,7	0,7	Parallel 0,7 Series 1,3	Parallel 0,7 Series 1,3
Vuoto (Assoluto) Vacuum (Abs)	mbar	200	200	Parallel 200 Series 40	Parallel 200 Series 40	100	100	Parallel 100 Series 15	Parallel 100 Series 15
Tensione* Voltage*	volt	110/230 AC	12/24 DC	110/230 AC	12/24 DC	110/230 AC	12/24 DC	110/230 AC	12/24 DC
Dimensioni Dimensions	mm	140x74x104	131x60x104	147x133x100	149x133x75	169x81x130	177x90x130	194x153x94	230x153x94
Peso Weight	kg	1,31	0,62	1,59	1,19	2,13	1,90	3,20	2,70

* Su richiesta possiamo fornire motori con voltaggi diversi / Motors having different voltages could be supplied on demand